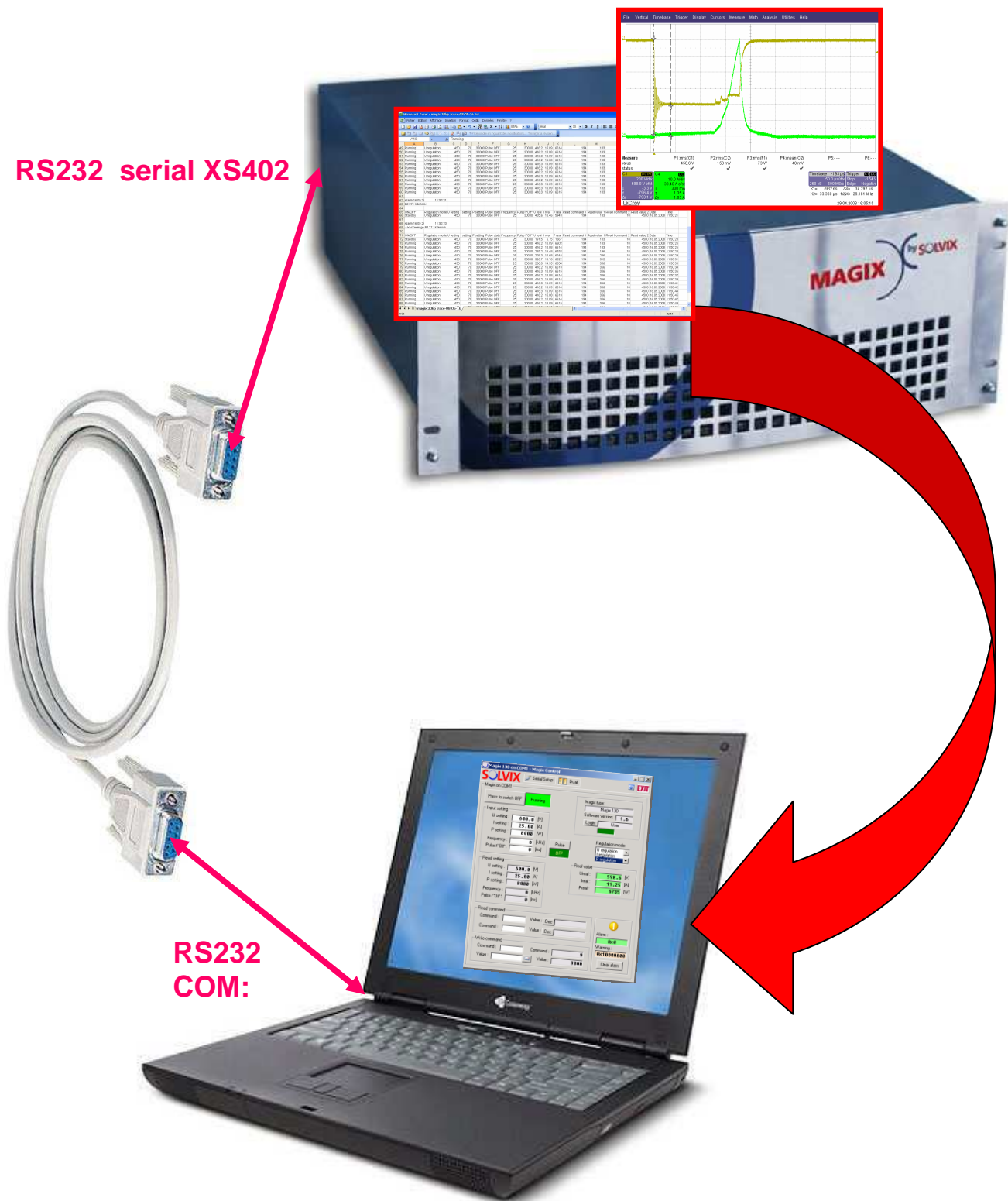


Trace File Operations



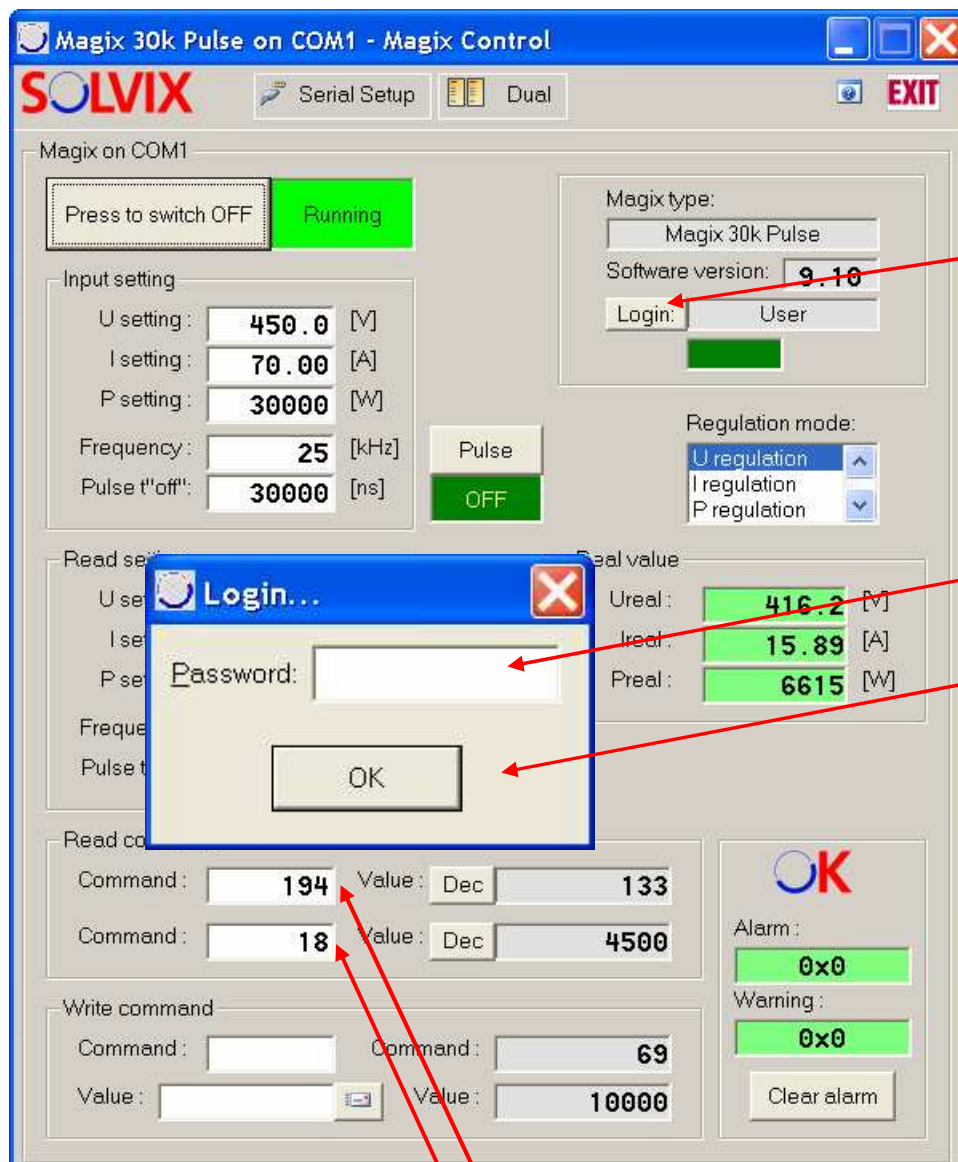
Trace File Operations

Start Magix Control Monitor Program

Following the procedure:

→ Click on the Login button

→ Enter the operator password « 1234 » in the window [OK]



Login

Password
« 1234 »

OK

Additional « read parameter 1 » tracing...

Ex: 194 → hard arc counter = [133 arcs]

Additional « read parameter 2 » tracing...

Ex: 18 → arc trip level = [45.00A]

Trace File Operations

Magix 30k Pulse on COM1 - Magix Control

SOLVIX Serial Setup Dual Flash EXIT

Magix on COM1

Press to switch OFF Running

Input setting

U setting : 450.0 [V]
I setting : 70.00 [A]
P setting : 30000 [W]
Frequency : 25 [kHz]
Pulse t'off' : 30000 [ns]

Magix type: Magix 30k Pulse
Software version: 9.10
Login: Operator

Regulation mode:
U regulation
I regulation
P regulation

Read setting

U setting : 450.0 [V]
I setting : 70.00 [A]

Real value

Ureal: 416.3 [V]
Ireal: 15.89 [A]
P: 6615 [W]

Trace file

Alarm : 0x0
Warning : 0x0
Clear alarm

Trace file option - Magix on COM1

Processing operation...

Start trace file
Stop trace file
Cancel

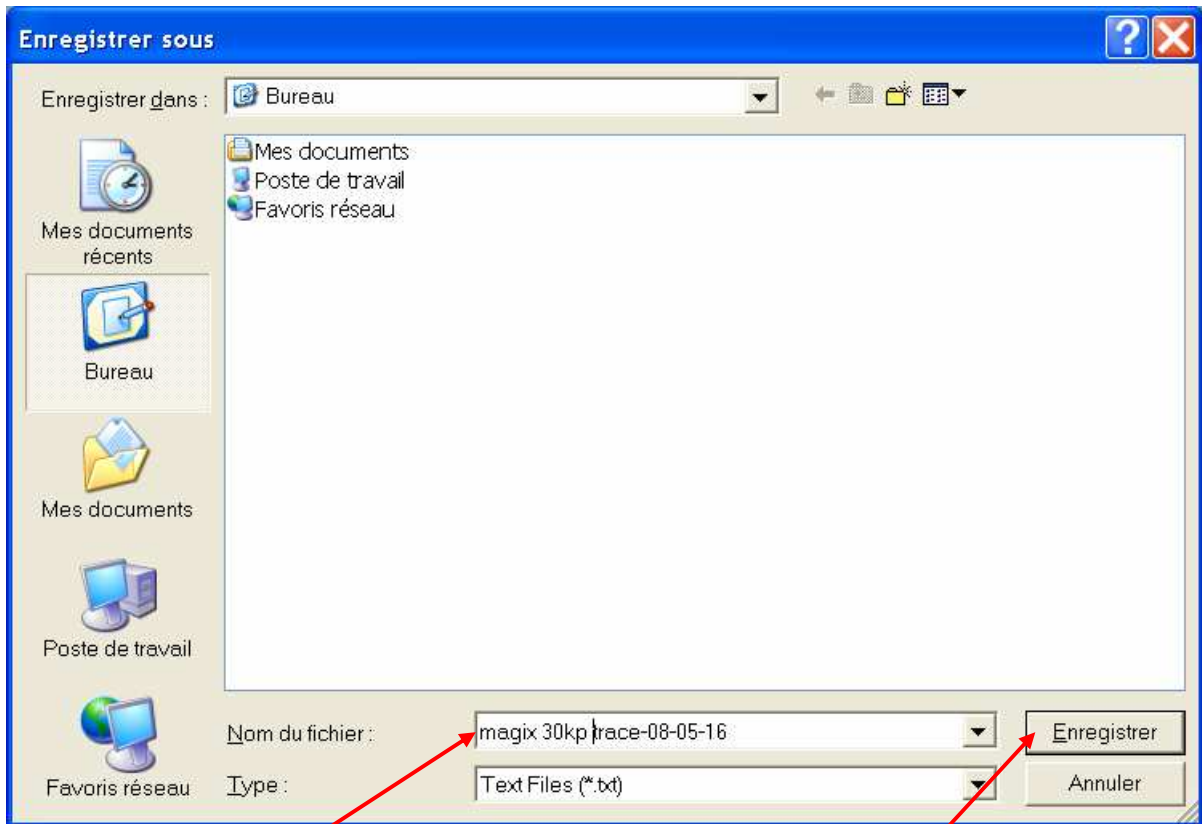
Your Login Access is Operator !

Active Trace file option

View on the file name Processing operation...

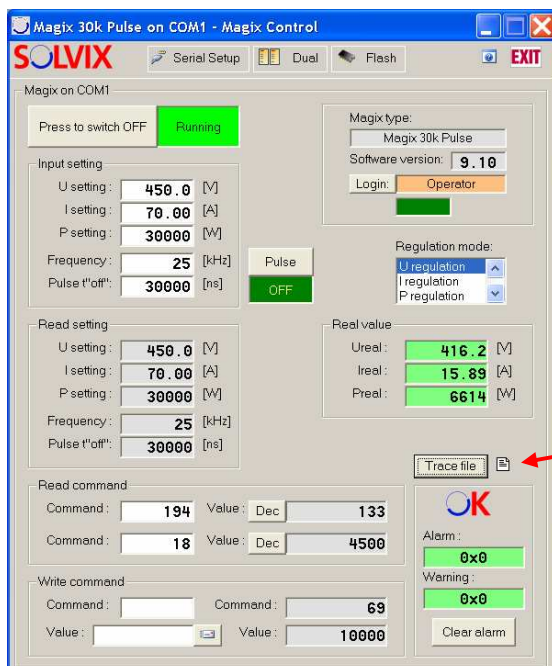
Start the trace file (backward process)
Do not close the Magix Control !

Trace File Operations



Enter the File Name of your Trace Record File

Valid ok !



Trace record is running !

Trace File Operations

At the end of the receipte...

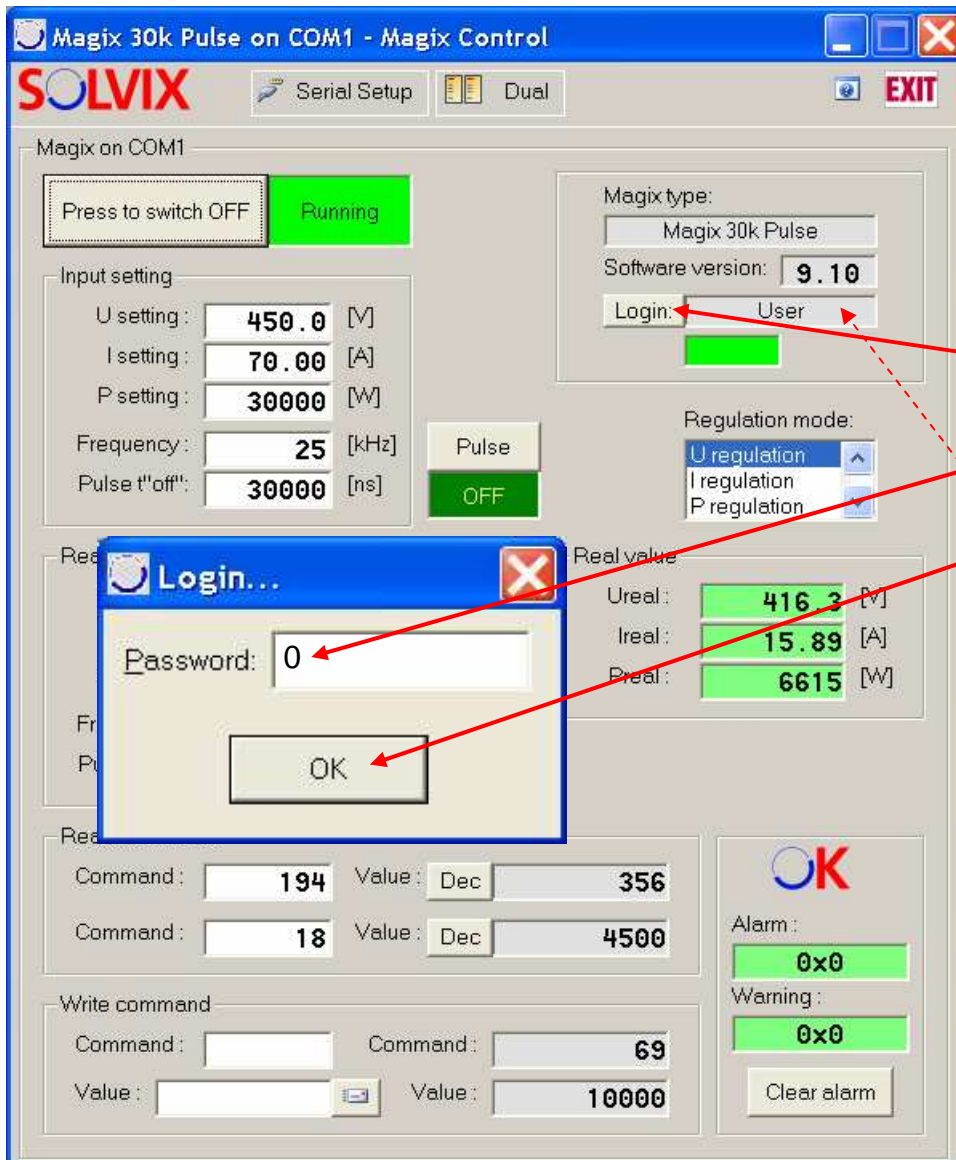
When you have detected the behaviour...

Open Trace file window

Stop the trace record

*The TEXT file is successful stored
To send a e-mail to Solvix...
Use This trace file format !*

Trace File Operations



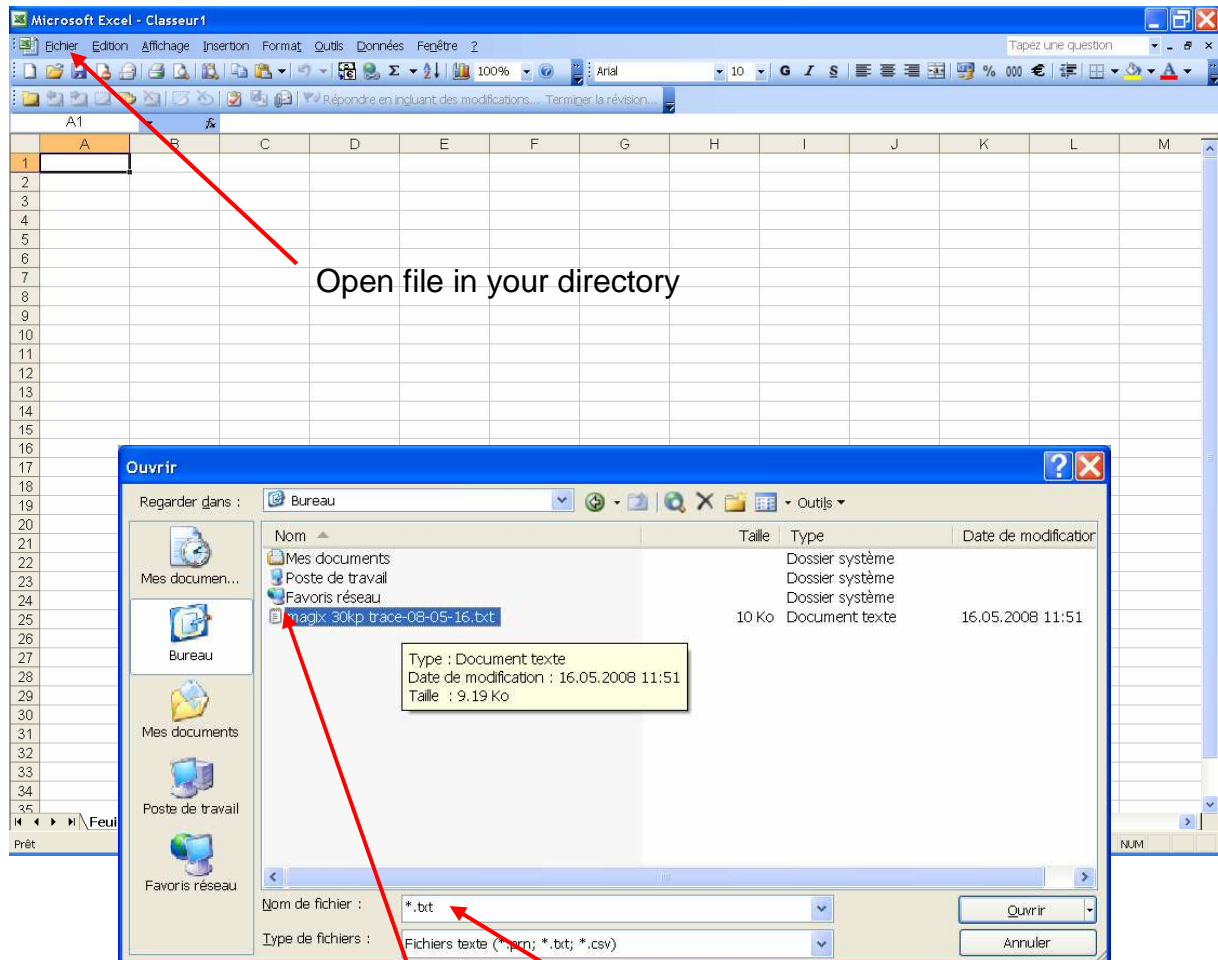
Clear login
Access !

Write zero code

Return to
User access !

Trace File Operations

Use EXCEL program to get a more comfort readability
It's easier to import a TEXT file and convert to EXCEL format



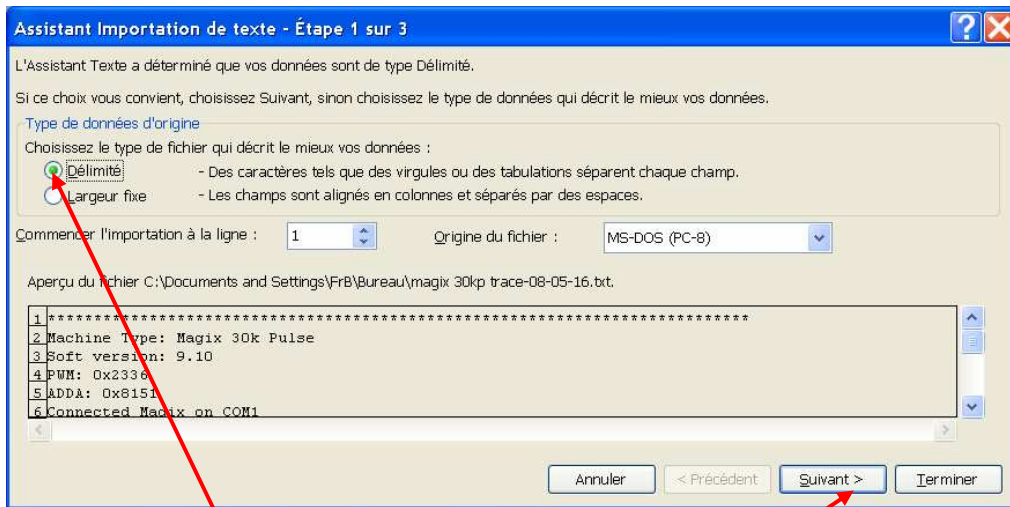
Open file in your directory

Select the « *.txt » extension file mask
You can see all TEXT files...

Click on the last record file name

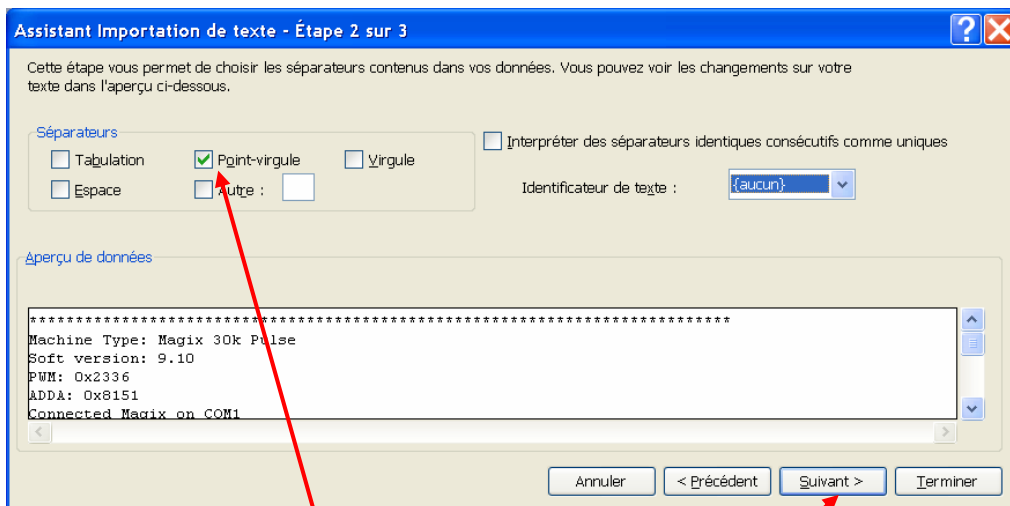
Trace File Operations

Import the TEXT file format delimited with [;]



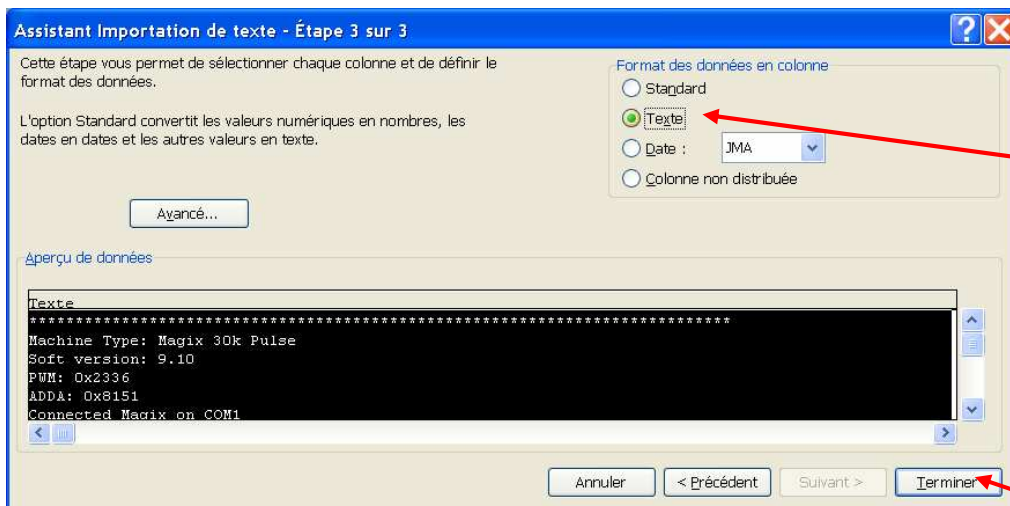
Import TEXT delimited

next



Select the delimiter [;]

next



Select all in Text format

8

Finish

Trace File Operations

Resize the EXCEL format to show all datas

The screenshot shows a Microsoft Excel spreadsheet titled "magix 30kp trace-08-05-16.txt". The spreadsheet contains a table with the following columns: ON/OFF, Regulation mode, U setting, I setting, P setting, Frequency, Pulse t*Off, U real, I real, P real, Read command 1, Read value 1, Read Command 2, Read value 2, Date, and Time. The data rows show a sequence of "Running" operations with "U regulation" mode, consistent settings (450, 70, 30000), and a "Pulse OFF" state. The "Date" column shows a range from 16.05.2008 to 11.49.00, and the "Time" column shows values from 11:49:00 to 11:49:48.

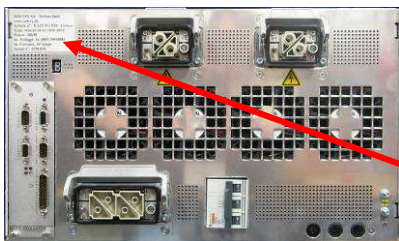
ON/OFF	Regulation mode	U setting	I setting	P setting	Frequency	Pulse t*Off	U real	I real	P real	Read command 1	Read value 1	Read Command 2	Read value 2	Date	Time
Running	U regulation	450	70	30000	Pulse OFF	25	30000	416.2	15.89	6615	194	133	18	4500	16.05.2008 11:49:00
Running	U regulation	450	70	30000	Pulse OFF	25	30000	416.3	15.89	6614	194	133	18	4500	16.05.2008 11:49:01
Running	U regulation	450	70	30000	Pulse OFF	25	30000	416.2	15.89	6614	194	133	18	4500	16.05.2008 11:49:03
Running	U regulation	450	70	30000	Pulse OFF	25	30000	416.2	15.89	6614	194	133	18	4500	16.05.2008 11:49:04
Running	U regulation	450	70	30000	Pulse OFF	25	30000	416.3	15.89	6615	194	133	18	4500	16.05.2008 11:49:06
Running	U regulation	450	70	30000	Pulse OFF	25	30000	416.2	15.89	6614	194	133	18	4500	16.05.2008 11:49:08
Running	U regulation	450	70	30000	Pulse OFF	25	30000	416.3	15.89	6614	194	133	18	4500	16.05.2008 11:49:09
Running	U regulation	450	70	30000	Pulse OFF	25	30000	416.2	15.89	6614	194	133	18	4500	16.05.2008 11:49:11
Running	U regulation	450	70	30000	Pulse OFF	25	30000	416.3	15.89	6614	194	133	18	4500	16.05.2008 11:49:12
Running	U regulation	450	70	30000	Pulse OFF	25	30000	416.3	15.89	6615	194	133	18	4500	16.05.2008 11:49:14
Running	U regulation	450	70	30000	Pulse OFF	25	30000	416.2	15.89	6614	194	133	18	4500	16.05.2008 11:49:16
Running	U regulation	450	70	30000	Pulse OFF	25	30000	416.3	15.89	6615	194	133	18	4500	16.05.2008 11:49:17
Running	U regulation	450	70	30000	Pulse OFF	25	30000	416.3	15.89	6614	194	133	18	4500	16.05.2008 11:49:19
Running	U regulation	450	70	30000	Pulse OFF	25	30000	416.2	15.88	6614	194	133	18	4500	16.05.2008 11:49:21
Running	U regulation	450	70	30000	Pulse OFF	25	30000	416.2	15.89	6614	194	133	18	4500	16.05.2008 11:49:22
Running	U regulation	450	70	30000	Pulse OFF	25	30000	416.3	15.89	6614	194	133	18	4500	16.05.2008 11:49:24
Running	U regulation	450	70	30000	Pulse OFF	25	30000	416.3	15.89	6615	194	133	18	4500	16.05.2008 11:49:25
Running	U regulation	450	70	30000	Pulse OFF	25	30000	416.3	15.89	6614	194	133	18	4500	16.05.2008 11:49:27
Running	U regulation	450	70	30000	Pulse OFF	25	30000	416.2	15.89	6615	194	133	18	4500	16.05.2008 11:49:29
Running	U regulation	450	70	30000	Pulse OFF	25	30000	416.3	15.89	6615	194	133	18	4500	16.05.2008 11:49:30
Running	U regulation	450	70	30000	Pulse OFF	25	30000	416.3	15.89	6614	194	133	18	4500	16.05.2008 11:49:32
Running	U regulation	450	70	30000	Pulse OFF	25	30000	416.3	15.89	6615	194	133	18	4500	16.05.2008 11:49:33
Running	U regulation	450	70	30000	Pulse OFF	25	30000	416.2	15.89	6614	194	133	18	4500	16.05.2008 11:49:35
Running	U regulation	450	70	30000	Pulse OFF	25	30000	416.3	15.89	6614	194	133	18	4500	16.05.2008 11:49:37
Running	U regulation	450	70	30000	Pulse OFF	25	30000	416.3	15.88	6614	194	133	18	4500	16.05.2008 11:49:38
Running	U regulation	450	70	30000	Pulse OFF	25	30000	416.2	15.88	6614	194	133	18	4500	16.05.2008 11:49:40
Running	U regulation	450	70	30000	Pulse OFF	25	30000	416.3	15.89	6615	194	133	18	4500	16.05.2008 11:49:41
Running	U regulation	450	70	30000	Pulse OFF	25	30000	416.3	15.89	6614	194	133	18	4500	16.05.2008 11:49:43
Running	U regulation	450	70	30000	Pulse OFF	25	30000	416.3	15.89	6615	194	133	18	4500	16.05.2008 11:49:45
Running	U regulation	450	70	30000	Pulse OFF	25	30000	416.2	15.89	6614	194	133	18	4500	16.05.2008 11:49:46
Running	U regulation	450	70	30000	Pulse OFF	25	30000	416.3	15.89	6614	194	133	18	4500	16.05.2008 11:49:48

Trace File Operations

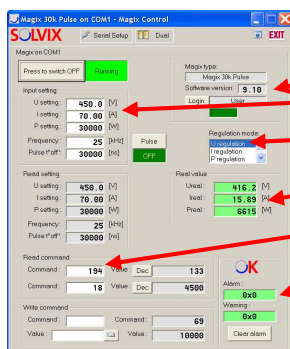
Analyse the behavior of the process...
Step by step...

A	B	C	D	E	F	G	H	I	J	K	L	M	N	O	P	Q	
49	Running	U regulation	450	70	30000	Pulse OFF	25	30000	416.2	15.89	6614	194	133	18	4500	16.05.2008	11:50:02
50	Running	U regulation	450	70	30000	Pulse OFF	25	30000	416.2	15.89	6614	194	133	18	4500	16.05.2008	11:50:04
51	Running	U regulation	450	70	30000	Pulse OFF	25	30000	416.3	15.89	6615	194	133	18	4500	16.05.2008	11:50:05
52	Running	U regulation	450	70	30000	Pulse OFF	25	30000	416.2	15.88	6614	194	133	18	4500	16.05.2008	11:50:07
53	Running	U regulation	450	70	30000	Pulse OFF	25	30000	416.3	15.89	6615	194	133	18	4500	16.05.2008	11:50:09
54	Running	U regulation	450	70	30000	Pulse OFF	25	30000	416.2	15.89	6614	194	133	18	4500	16.05.2008	11:50:10
55	Running	U regulation	450	70	30000	Pulse OFF	25	30000	416.2	15.89	6614	194	133	18	4500	16.05.2008	11:50:12
56	Running	U regulation	450	70	30000	Pulse OFF	25	30000	416.3	15.89	6614	194	133	18	4500	16.05.2008	11:50:13
57	Running	U regulation	450	70	30000	Pulse OFF	25	30000	416.2	15.89	6614	194	133	18	4500	16.05.2008	11:50:15
58	Running	U regulation	450	70	30000	Pulse OFF	25	30000	416.3	15.89	6615	194	133	18	4500	16.05.2008	11:50:17
59	Running	U regulation	450	70	30000	Pulse OFF	25	30000	416.3	15.89	6614	194	133	18	4500	16.05.2008	11:50:18
60	Running	U regulation	450	70	30000	Pulse OFF	25	30000	416.3	15.89	6615	194	133	18	4500	16.05.2008	11:50:20
61																	
62	Alarm	16.05.21															11:50:21
63	Bit 27 :	Interlock															
64																	
65	ON/OFF	Regulation mode	U setting	I setting	P setting	Pulse state	Frequency	Pulse *Off*	U real	I real	P real	Read command 1	Read value 1	Read Command 2	Read value 2	Date	Time
66	Standby	U regulation	450	70	30000	Pulse OFF	25	30000	405.6	15.46	5943	194	133	18	4500	16.05.2008	11:50:21
67																	
68	Alarm	16.05.21															11:50:23
69	- acknowledge	Bit 27 :	Interlock														
70																	
71	ON/OFF	Regulation mode	U setting	I setting	P setting	Pulse state	Frequency	Pulse *Off*	U real	I real	P real	Read command 1	Read value 1	Read Command 2	Read value 2	Date	Time
72	Standby	U regulation	450	70	30000	Pulse OFF	25	30000	191.5	6.75	1567	194	133	18	4500	16.05.2008	11:50:23
73	Running	U regulation	450	70	30000	Pulse OFF	25	30000	416.2	15.89	6602	194	133	18	4500	16.05.2008	11:50:25
74	Running	U regulation	450	70	30000	Pulse OFF	25	30000	416.2	15.88	6614	194	133	18	4500	16.05.2008	11:50:26
75	Running	U regulation	450	70	30000	Pulse OFF	25	30000	235.2	15.48	6452	194	196	18	4500	16.05.2008	11:50:28
76	Running	U regulation	450	70	30000	Pulse OFF	25	30000	208.3	14.68	6245	194	236	18	4500	16.05.2008	11:50:29
77	Running	U regulation	450	70	30000	Pulse OFF	25	30000	326.7	15.76	6322	194	312	18	4500	16.05.2008	11:50:31
78	Running	U regulation	450	70	30000	Pulse OFF	25	30000	266.8	14.95	6038	194	356	18	4500	16.05.2008	11:50:33
79	Running	U regulation	450	70	30000	Pulse OFF	25	30000	416.2	15.88	6613	194	356	18	4500	16.05.2008	11:50:34
80	Running	U regulation	450	70	30000	Pulse OFF	25	30000	416.3	15.89	6615	194	356	18	4500	16.05.2008	11:50:36
81	Running	U regulation	450	70	30000	Pulse OFF	25	30000	416.2	15.88	6614	194	356	18	4500	16.05.2008	11:50:37
82	Running	U regulation	450	70	30000	Pulse OFF	25	30000	416.2	15.88	6614	194	356	18	4500	16.05.2008	11:50:39
83	Running	U regulation	450	70	30000	Pulse OFF	25	30000	416.3	15.89	6615	194	356	18	4500	16.05.2008	11:50:41
84	Running	U regulation	450	70	30000	Pulse OFF	25	30000	416.2	15.89	6614	194	356	18	4500	16.05.2008	11:50:42
85	Running	U regulation	450	70	30000	Pulse OFF	25	30000	416.3	15.89	6615	194	356	18	4500	16.05.2008	11:50:44
86	Running	U regulation	450	70	30000	Pulse OFF	25	30000	416.2	15.88	6613	194	356	18	4500	16.05.2008	11:50:45
87	Running	U regulation	450	70	30000	Pulse OFF	25	30000	416.2	15.89	6614	194	356	18	4500	16.05.2008	11:50:47
88	Running	U regulation	450	70	30000	Pulse OFF	25	30000	416.2	15.89	6615	194	356	18	4500	16.05.2008	11:50:49

Help and Support
<http://www.solvix.ch>
E-mail: info@solvix.ch



At first, we need the Serial Number ?



The software version
The setting value
The setting regulation type
The actual value
The hard arc counter
The alarm bit message